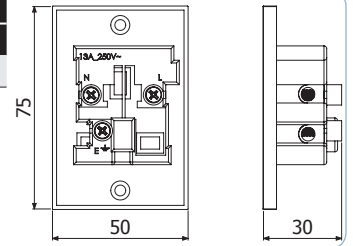




**B-T**



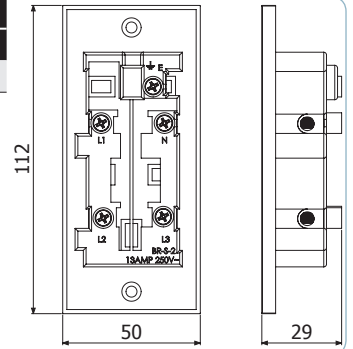
B-T	REF.	kg/m
	2/4723	0,04



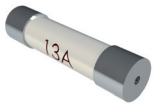
**B-TS**



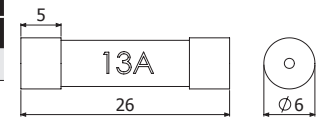
B-TS	REF.	kg/m
	2/4912	0,07



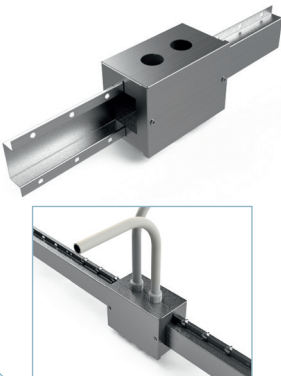
**F13A**



F13A	REF.	kg/m
	2/0404	0,01

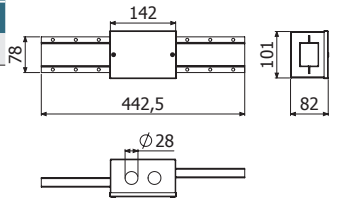


**KADP**



KADP	GS	
	REF.	kg/m
	2/0400	0,88

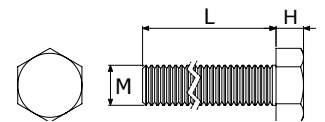
12 x DIN933 M6x20 (2/17548 - EZ) + 12 x DIN6923 M6 (2/17552 - EZ)



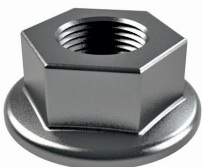
**DIN933**



DIN933 M6X20	P	M	L	H	EZ	
	Nm	mm	mm	mm	REF.	kg/ud
	8	6	20	4,1	2/17548	0,02



**DIN6923**



DIN6923 M6	d	Dext	A	H	EZ	
	mm	mm	mm	mm	REF.	kg/ud
	M6	14	10	6	2/17552	0,01

